



Name	Specification Diode Laser
Wavelength	980 nm
Model name	Powerful Diode Laser
Laser peak power	12 W
Power supply input	100 – 240 AC 50/60 Hz
Pulse length	1 μ s ÷ <i>continuous</i>
Pulse features	Super Short Pulse – No charring
Frequency	<i>Continuous</i> ÷ 25kHz
Dimensions	250x230x100 mm LxPxH
Net Weight	2.5 Kg
Medical Class	II B
Laser class	4
Dimensions	

Litemedics is a certified medical device for use in dentistry. It is a practical and simple tool that will revolutionize the everyday routine in your dental practice. The touch screen gives immediate access to pre-set treatments, multiple language menu and built-in protocols.

Innovative features

DGS - Dynamic Guide System: created to simplify dentistry for beginners and maximize the experience for expert users will carefully escort the operator to perform a lot of operations in all tissues with greater efficiency.

Direct selection of treatment: A dedicated button for every treatment, set with the most suitable and scientifically acknowledged parameters for each operation, gives to the operator a quick and immediate start up in several fields: endodontics, periodontics, surgery, therapy, and whitening.

Multipurpose unit: the unit is supplied with specific a handpiece for dentistry and thanks to its great adaptability, it can be matched with a universal handpiece for multidisciplinary purposes. A whitening and a Biostimulation handpiece set complete the offer.

From LLLT to Max Power: the unit may be used at the minimum power required for therapeutic protocol as well as a powerful surgical instrument (12W) to maximize the performance in surgery.

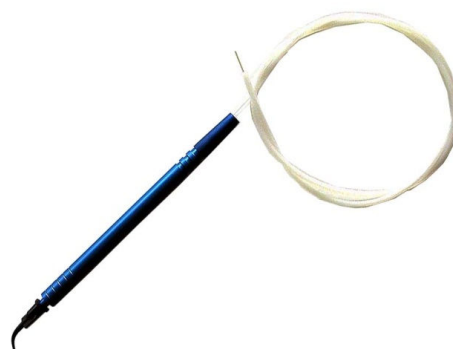


KEEPS COSTS LOW: Disposable tips with a low operating cost make it well suited for any operator.
MULTIPLE MODES: works in either pulse or continuous modes with up to 12Watts of peak of power.
ADDED PLUS: The LITEMEDICS comes with a clinical training booklet and a 3-year warranty.

LITEMEDICS PACKAGE INCLUDES:



Laser Console



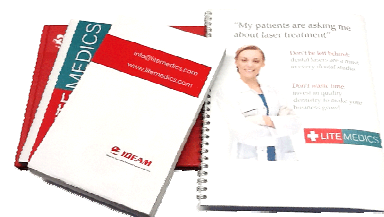
Handpiece & Fiber



Box accessories



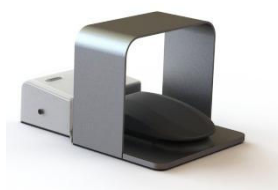
3 Pairs of laser goggles



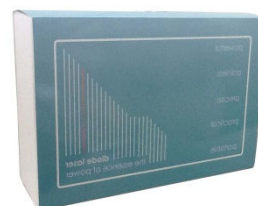
Set-up CD & booklet



Power supply



Pedal with cable



Packaging